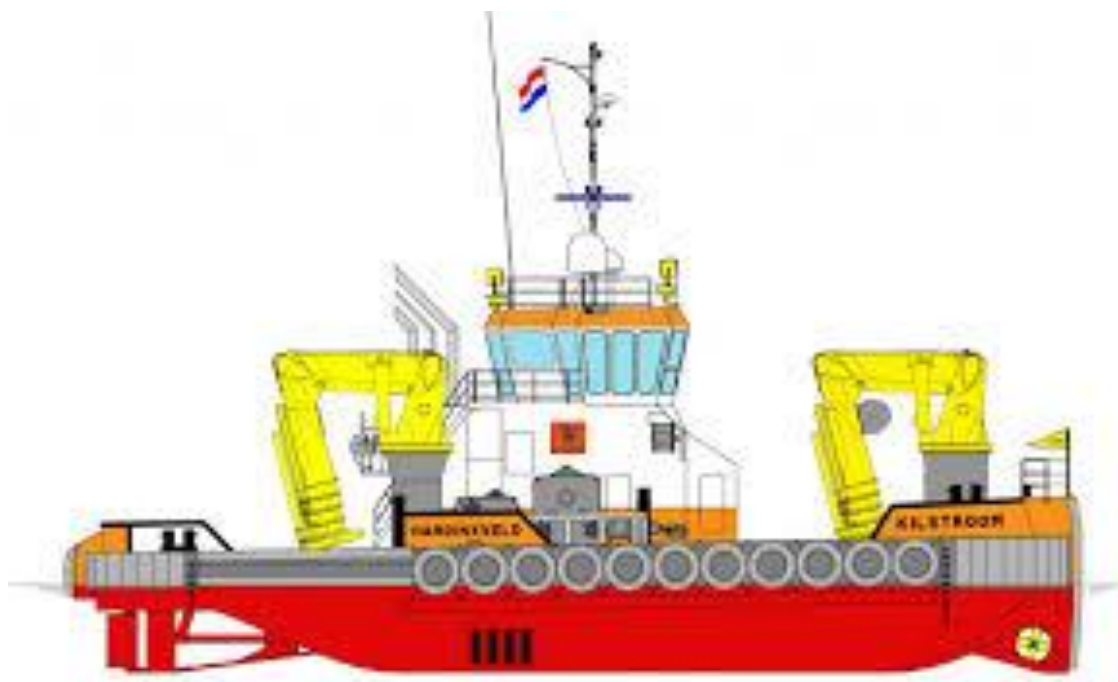




## TUGS TOWING & OFFSHORE NEWS SPECIAL

### “KILSTROOM”



*Advertisement*

	<b>PROVEN DESIGN &amp; STANDARDISED FIRST CLASS COMPONENTS</b>	
		

On Thursday April 09, 2020 the new build Damen Shipyards Hardinxveld yard number 571684 MultiCat 3013 “[Kilstroom](#)” was christened at the Gemeentehaven – Hardinxveld-Giessendam

MultiCat 3013 “[Kilstroom](#)” (Imo 9766425) is the newest addition to the Van Wijngaarden Marine Services B.V. and the first MultiCat for the owner

**Kilstroom** type Multicat 3013 is a proven design which has been thoroughly tested over the years by loyal Damen customers. Designed for multiple roles undertaking varied assignments in diverse working environments. The Multi Cat has optimum deck space in relation to its deck equipment. This means maximum efficient operation with minimal crew. The wheelhouse has also 360 degree visibility which ensures the highest standards of safety on the deck.

The multifunctional tug is built for Towing, Anchor Handling, Dredge support, Diving support, Oil & Gas support, Sustainable Energy support, Surveying, Ploughing

She is classed Bureau Veritas BV - I # HULL • Mach / Tug, Special service - Multi purpose ship / • AUT-UMS / DYNAPOS AM/AT – Notations: Clean ship; Green passport; In Water Survey; Anchor Handling DSI - Unrestricted navigation with call sign PDTI

Yard number 571684



Photo: Willem Holtkamp



**Van Wijngaarden Marine Services BV**  
**The Right Partner...  
all over the world.**

Buitenweistraat 15 | 3372 BC Hardinxveld-Giessendam | The Netherlands  
T +31 (0) 184 490 244 | E [info@wijngaarden.com](mailto:info@wijngaarden.com) | [wijngaarden.com](http://wijngaarden.com)

**KILSTROOM • UNDER CONSTRUCTION**  
• Multi Cat 3013 (DP1) • Delivery: 26th March 2020



Van Wijngaarden Marine Services has placed the order with Damen Shipyards Hardinxveld for a Damen Multi Cat 3013, to be named **KILSTROOM**. This latest order represents a new step for the family-owned company. To date, its relationship with Damen has focused on the group's Shoalbuster range with the company now operating five of the popular and versatile class. The Multi Cat 3013 will bring a new level of capability and allow Van Wijngaarden Marine Services to extend the range of services that it offers its customers.

#### Damen Multi Cat 3013 '**KILSTROOM**'

The Damen Multi Cats is a tough, multi-function vessels that, with their twin, heavy-duty cranes, rugged fendering, all-round visibility, extensive deck space and shallow draught, ideal for a wide range of coastal and offshore construction, maintenance and general-purpose activities. The 30-metre Multi Cat 3013 is one of the largest in the range with a bollard pull of 39.8 tonnes and the **KILSTROOM** is fitted with a dynamic positioning system along with additional customisations.



The contract was signed on 15 August by the CEO and managing director of Van Wijngaarden Marine Services Mr. Wim van Wijngaarden and Mr. Peter van Wijngaarden together with Jos van Woerkum, managing director of Damen Shipyards Hardinxveld.

“We very much look forward to taking delivery of our first Multi Cat,” says Peter van Wijngaarden. “This move is the result of discussions with our customers in the construction, dredging and wind farm support sectors. They are encouraging us to broaden the range of services that we offer and prefer to use Multi Cats for certain projects. **KILSTROOM** will also complement and enhance our Shoalbusters, with the two types of vessel capable of working together very effectively on a variety of assignments. As it will also be our first vessel with dynamic positioning, which adds an additional level of new capability. As well as the price and quality, the ability of Damen to deliver the Multi Cat 3013 in just six months was a significant factor in working with them once again.”

“We are very excited that our longstanding and valued client Van Wijngaarden Marine Services has selected a Damen DP Multi Cat for the latest addition to its fleet,” added Jos van Woerkum. “Over 300 of this series have been sold over the years around the world and the Damen philosophy of building for stock means that we will be delivering the **KILSTROOM** by the end of March next year.”

*Photo: Henk van Millingen*







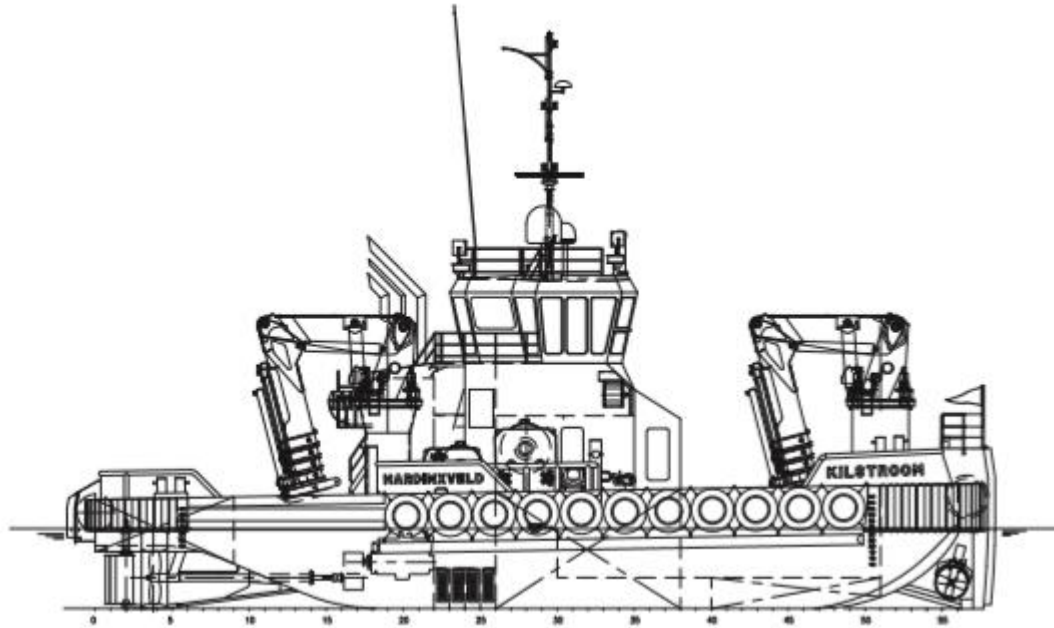
Sponsor lady of the Tug/Workboat [Kilstroom](#) was Mrs H.J. van Veen-de Rover Hilda is a Human Resources department employee and working 26 years for Van Wijngaarden Marine Services.

The Christening ceremony, due to the Covid-19 virus was hold according the RIVM rules hold with a few owner and yard representatives



Photo: @Rene van der Kloet

The “**Kilstroom**” has a length of 30.30 meters. She is width 13.42 meters and has a depth at half-length at sides of 3.80 meters. Her shallow draft minimum is 2.60 meters and maximum 3.10 mtrs.. She has a grt. of 341 tonnes a nrt of 102 tons and a has a displacement of 530 tons.



#### **Propulsion system:**

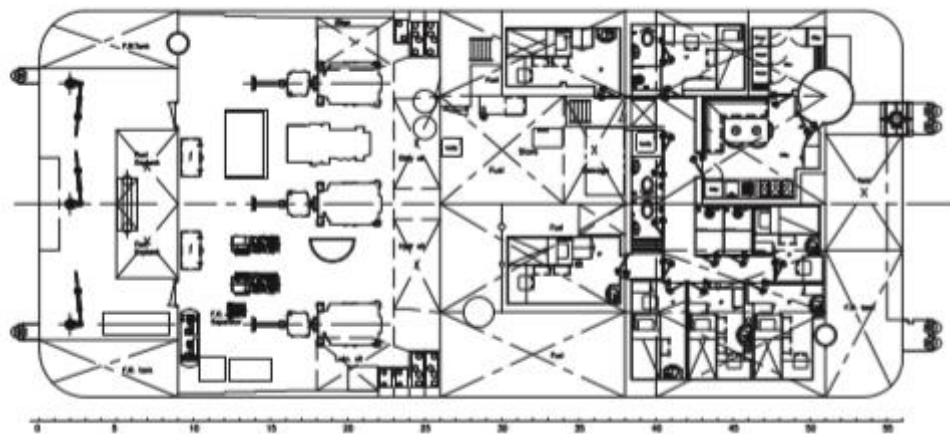
The main power is provided by three Caterpillar C32-TTA ACERT diesels each developing 746 kW (1,015 hp) at 1,800 rev/min. This is delivered to a three screw arrangement fixed pitch propellers turning in 1,700 mm Van der Giessen optima nozzles via Reintjes WAF562L gearboxes with reduction ratio of 5.947:1. On trails, this configuration gave the vessel an average bollard pull ahead of 38.9 tonnes and a free running speed of 11 knots. The 294 kW (400 bhp) (Ø 1,060 mm) bow thruster is Hydraulically driven FPP.

#### **Caterpillar Main Engine's**





Caterpillar with hydro set

*Below main deck***Auxiliary equipment:**

The **Kilstroom** has two Generator sets made Caterpillar C4.4 units, each with an output of 107 kVA, 50Hz – 230/400V AC – 50Hz; an Hydroset driven by a Caterpillar type C32-TTA Acert with an output of 632 kW at 1,800 rpm. The fuel separator is from Alfa Laval MIB 303, The transfer pumps for water and fuel are type SIHI with a capacity of 50m<sup>3</sup>/hr at 4.8 bar. A compressor set Alup type SCK 30. A sewage treatment installation plant; A fuel separator and a HV?AC installation.

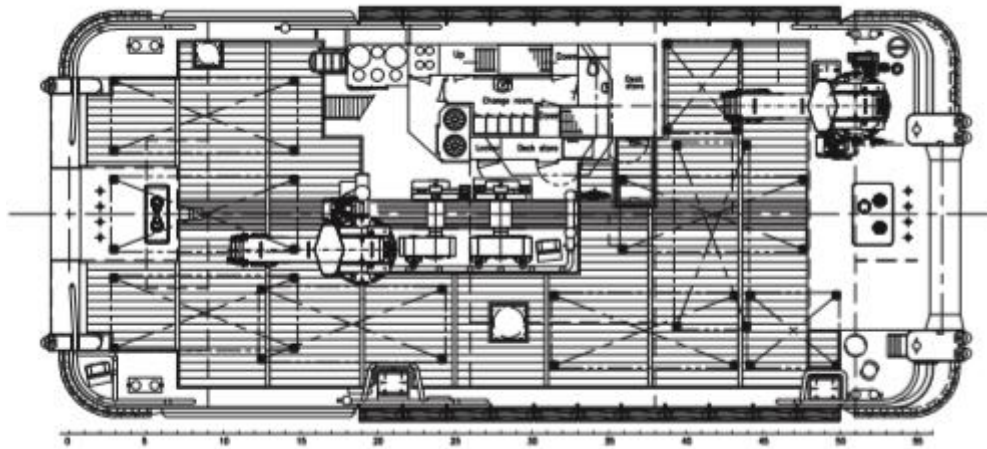


Compressor set



Steering gear



**Deck layout:****Deck Lay out:**

The deck machinery comprises a Pool TW (HHP) anchor of 360kg with a 19 mm stud-link anchor chain 275m. Towing winch is a Kraaijeveld winch with a drum of 900 mtr. Length and a diameter Ø 40 mm steel wire, 40 / 100 T. The Anchor Handling winch is a Kraaijeveld winch with a drum with 200 mtr. Length and a diameter Ø 54 mm steel wire, 150 / 170 T. Two Hydraulic cranes make Heila, type HLRM 440/4S, 440 T/m (12.3 T @ 20.6 mtr / 55.0 T @ 5.71 mtr.) Hydraulic winch on Fwd. crane, 10 T - 50 mtr. Two wire Tugger winches with a power of 12 T; A Hydraulic Deltapin wire catcher; a Chain stopper, SWL 100 T (fore deck) and a Hydraulic Towing pins, SWL 65 T (aft deck); A Bow roller with a length of 6.00 mtr. and a diameter of Ø 1200 mm and SWL 170 T and a Stern roller with a length of 3.00 mtr. and a diameter of Ø 1200 mm and SWL 100 T; Two Towing hooks SWL 20T and a Gob eye of SWL 55 T. Container locks (7x 20 ft. / 3x 10 ft.) and Push bow and stern.



Deck Crane



Towing Hook



**Tank arrangements/capacity:**

The tug/workboat consist tanks for the following liquids; Fuel tanks capacity of 170 m<sup>3</sup>; Fresh water tanks with a capacity of 53 m<sup>3</sup>; Lubrication oil with a capacity of 2.80 m<sup>3</sup>; Hydraulic oil with a capacity of 4.40 m<sup>3</sup>; Dirty oil tank with a capacity of 4.40 m<sup>3</sup>; sewage tank with a capacity of 6.80 m<sup>3</sup>; bilgewater tank of 2.80 m<sup>3</sup> and a potable water tank with a capacity of 25 m<sup>3</sup>.





**Accommodation:**

The tug has been outfitted to the highest standards heated and air-conditioned living quarters for 11 persons, consisting of three single cabins and four double crew cabins and optional one TLQ for 2-4 persons. a galley/messroom and sanitary facilities according to ILO 2006 regulations.



Galley - Messroom



Single bedroom cabin



Double room cabins

**Nautical and Communication Equipment:**

The bridge is equipped with extensive nautical and communication equipment Praxis DP1 system - 2x Radar (sea/river) - Magnetic compass - 2x Gyro compass - Auto pilot - GPS / Satellite navigation system Full ECDIS - AIS - 2x Echosounder - Speedlog - Windindicator 2x VHF + DSC - 1x VHF - SSB Radio + DSC - Navtex - V-SAT system - 2x Inmarsat-C - EPIRB - SART 2x HH VHF - Satcom + GSM

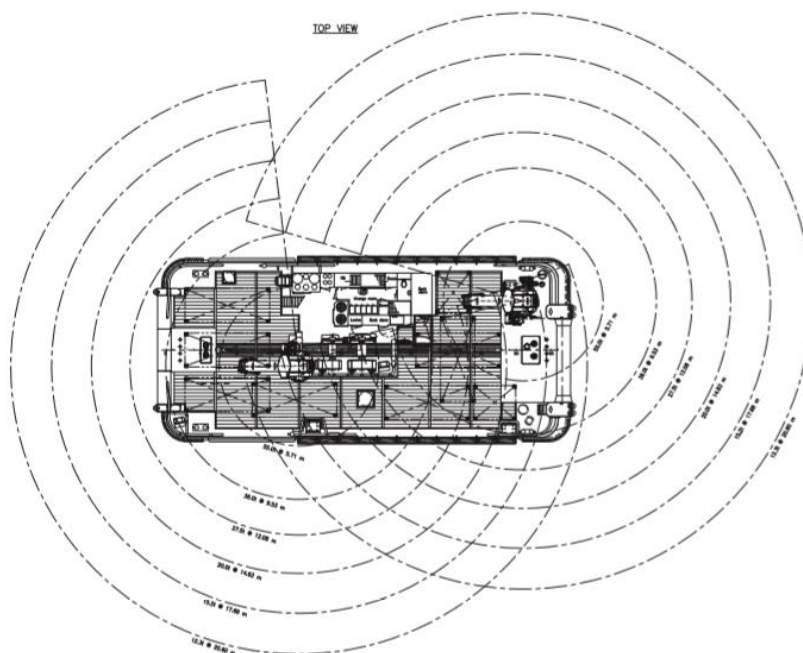
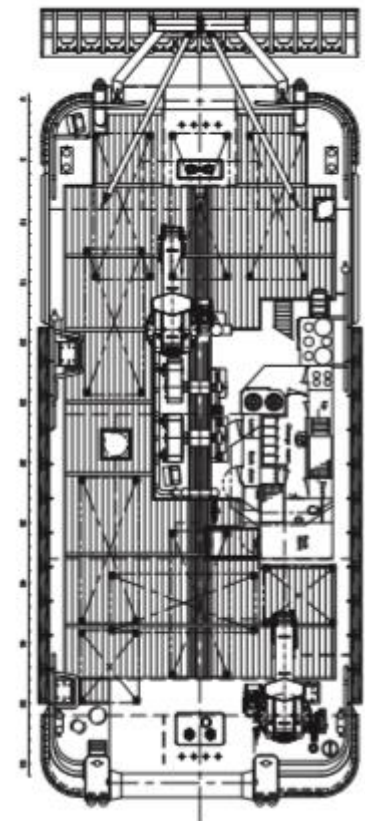
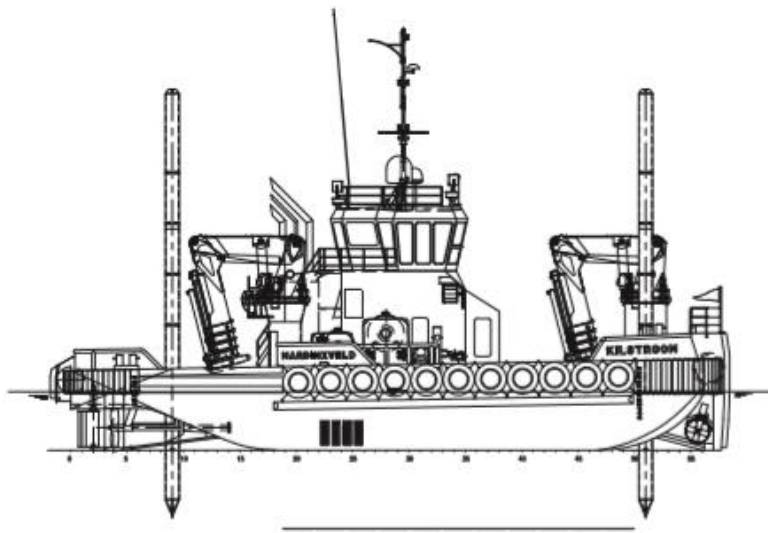


Bridge consoles

A chair is fitted on a sliding rail for the manoeuvring console. The very spacious bridge has a beautiful good looking layout with an around view over the fore deck, aft deck and sides. This Damen MultiCat is again built to the highest standards.

As optional the **Kilstroom** can be fitted with the following equipment:

- A-Frame (50 tons SWL)
- Ploughing equipment
- 4 points mooring system
- Spudpoles with a length of 16 mtrs
- Water injection dredging system
- Diving operations platform
- ROV platform
- Dynamic position





Pictures in this special are made by Rene van der Kloet, Henk van Millingen, Arie Boer en Stefan Mieras which towingline thanks them for the permission given via Van Wijngaarden Marine Service for publication in this special and also picture direct from Willem Holtkamp and Ruud Zegwaard



+++++

Towingline/Tugs Towing & Offshore News wish the vessel, the owner and her crew in all-weather work circumstances safe voyages



**WEBSITE**

***[HTTP://WWW.TOWINGLINE.COM](http://www.towingline.com)***

**ARE YOU ALSO INTERESTED IN THE FREE TUGS TOWING & OFFSHORE NEWSLETTER. PLEASE VISIT THE WEBSITE [WWW.TOWINGLINE.COM](http://www.towingline.com) AND SUBSCRIBE YOURSELF FOR FREE**